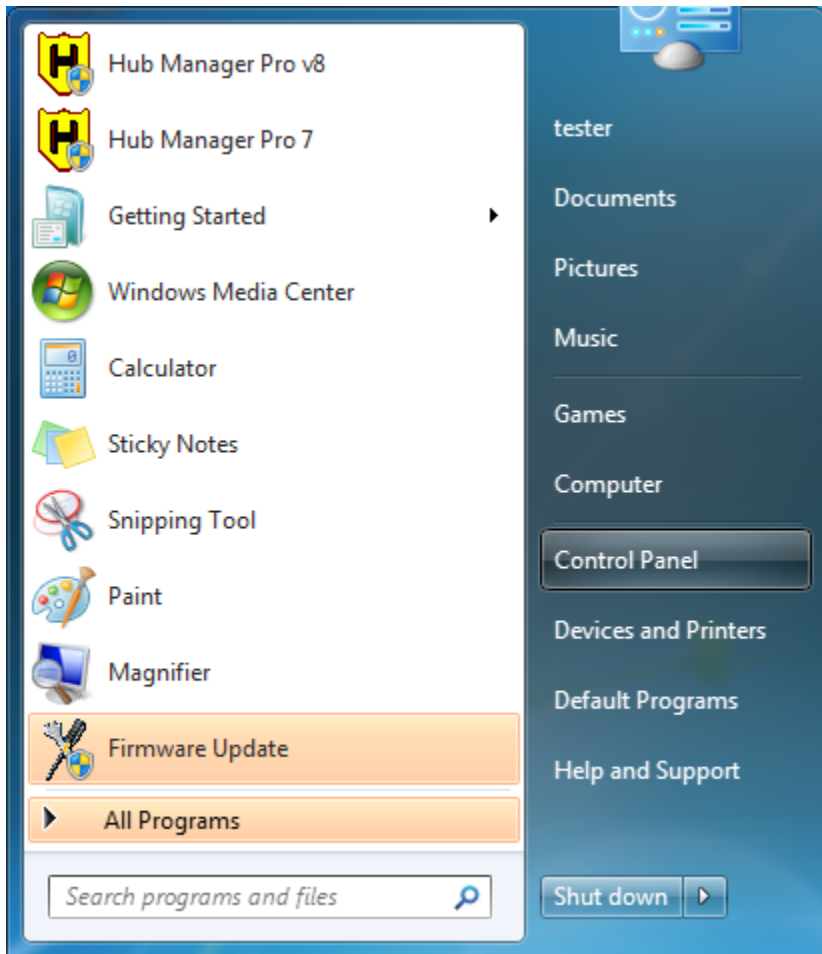


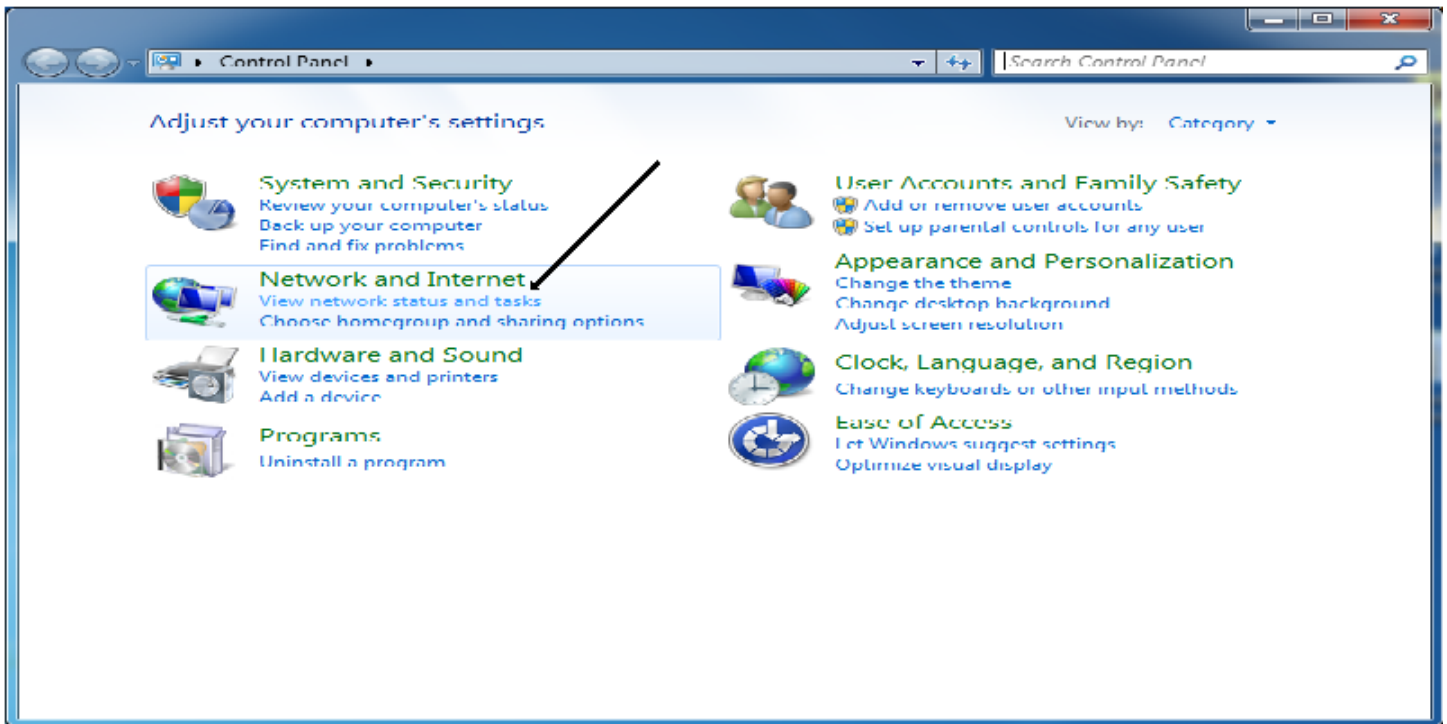
Create a Dialup Connection for the RE-1 and RE-2

Click the **Start** button

Click **Control Panel**



Under Network and Internet, click [View network status and tasks](#)



Click [Set up a new connection or network](#)

The screenshot shows the Windows Network and Sharing Center. The breadcrumb navigation at the top reads '<< Network and Internet >> Network and Sharing Center'. The main heading is 'View your basic network information and set up connections'. Below this, a network diagram shows 'WIN-GLQLR8GT3PE (This computer)' connected to 'Network', which is in turn connected to 'Internet'. A red 'X' is over the connection between 'Network' and 'Internet'. A 'See full map' link is on the right. Below the diagram is the section 'View your active networks' with a 'Connect or disconnect' link. It shows a 'Network' icon labeled 'Work network'. To the right, it displays 'Access type: No Internet access' and 'Connections: Local Area Connection'. The 'Change your networking settings' section is highlighted with a black arrow. It contains four links: 'Set up a new connection or network' (with a plus icon), 'Connect to a network' (with a plus icon), 'Choose homegroup and sharing options' (with a globe icon), and 'Troubleshoot problems' (with a computer icon). A 'See also' section on the left lists 'HomeGroup', 'Internet Options', and 'Windows Firewall'.

Control Panel Home

Change adapter settings

Change advanced sharing settings

View your basic network information and set up connections

WIN-GLQLR8GT3PE (This computer) Network Internet

See full map

View your active networks [Connect or disconnect](#)

Network
Work network

Access type: No Internet access

Connections: [Local Area Connection](#)

Change your networking settings

[Set up a new connection or network](#)
Set up a wireless, broadband, dial-up, ad hoc, or VPN connection; or set up a router or access point.

[Connect to a network](#)
Connect or reconnect to a wireless, wired, dial-up, or VPN network connection.

[Choose homegroup and sharing options](#)
Access files and printers located on other network computers, or change sharing settings.

[Troubleshoot problems](#)
Diagnose and repair network problems, or get troubleshooting information.

See also

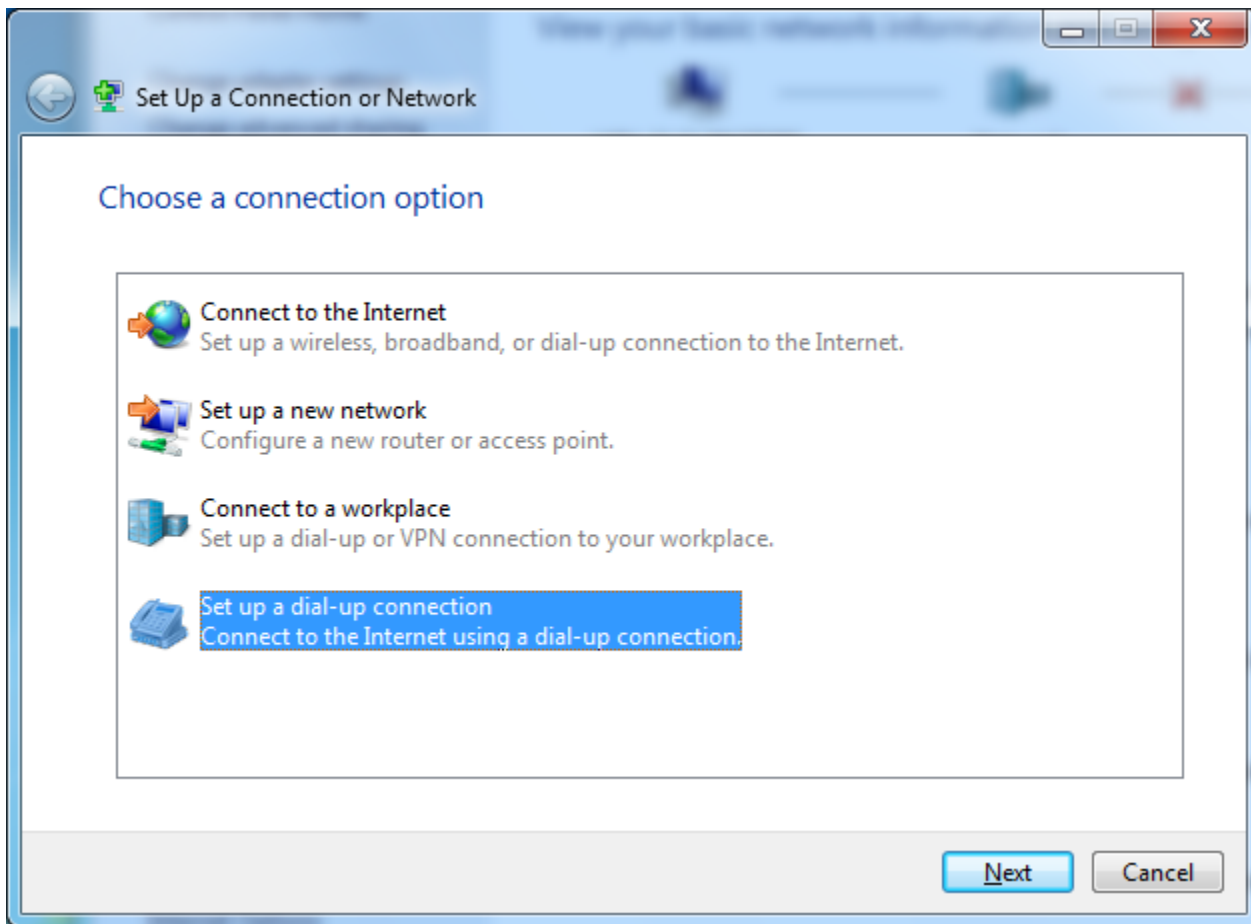
HomeGroup

Internet Options

Windows Firewall

Click Set up a dial-up connection

Click **N**ext



Enter the required data and click **C**onnect

Create a Dial-up Connection

Type the information from your Internet service provider (ISP)

Dial-up phone number: [Phone number your ISP gave you] [Dialing Rules](#)

User name: Linear

Password: 123456

Show characters

Remember this password

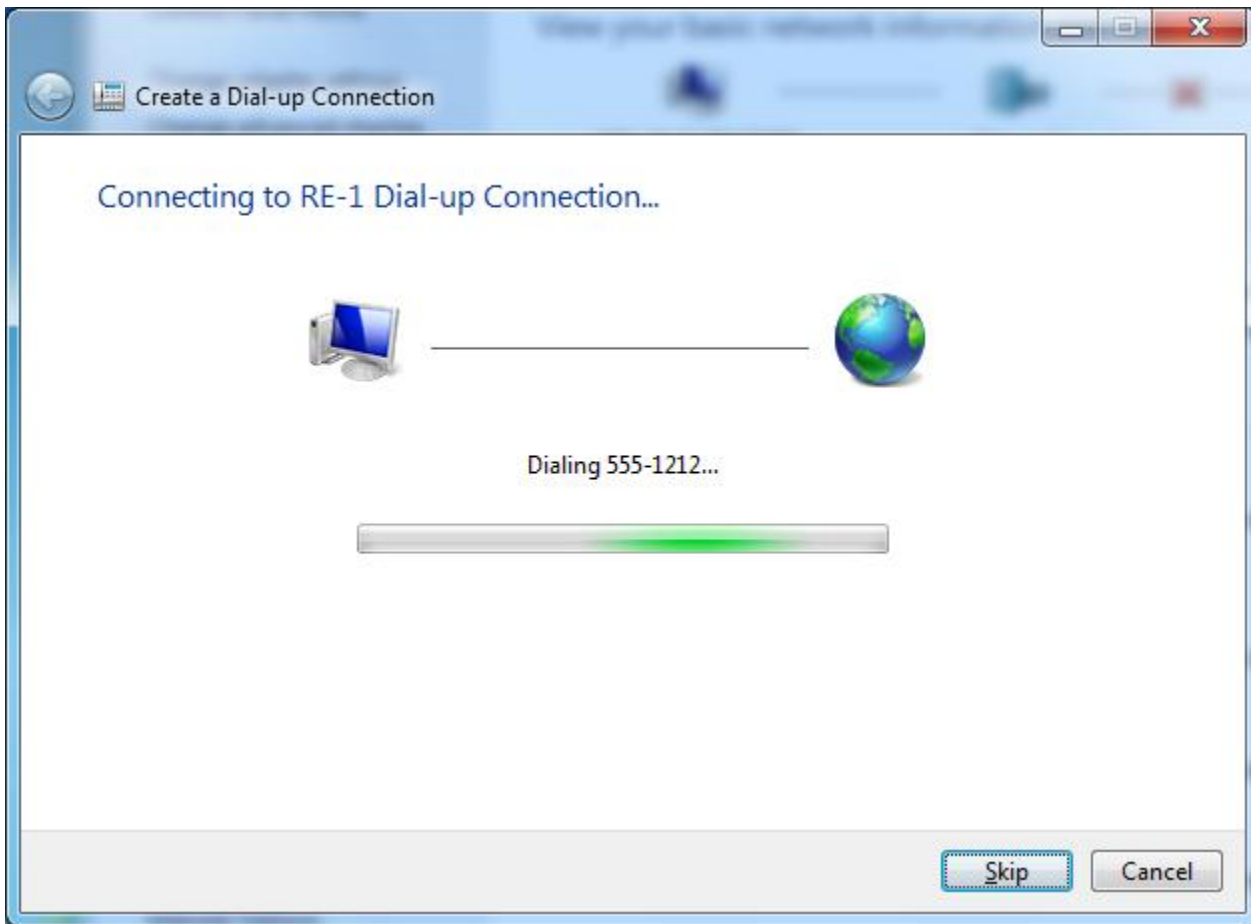
Connection name: RE-1 Dial-up Connection

Allow other people to use this connection
This option allows anyone with access to this computer to use this connection.

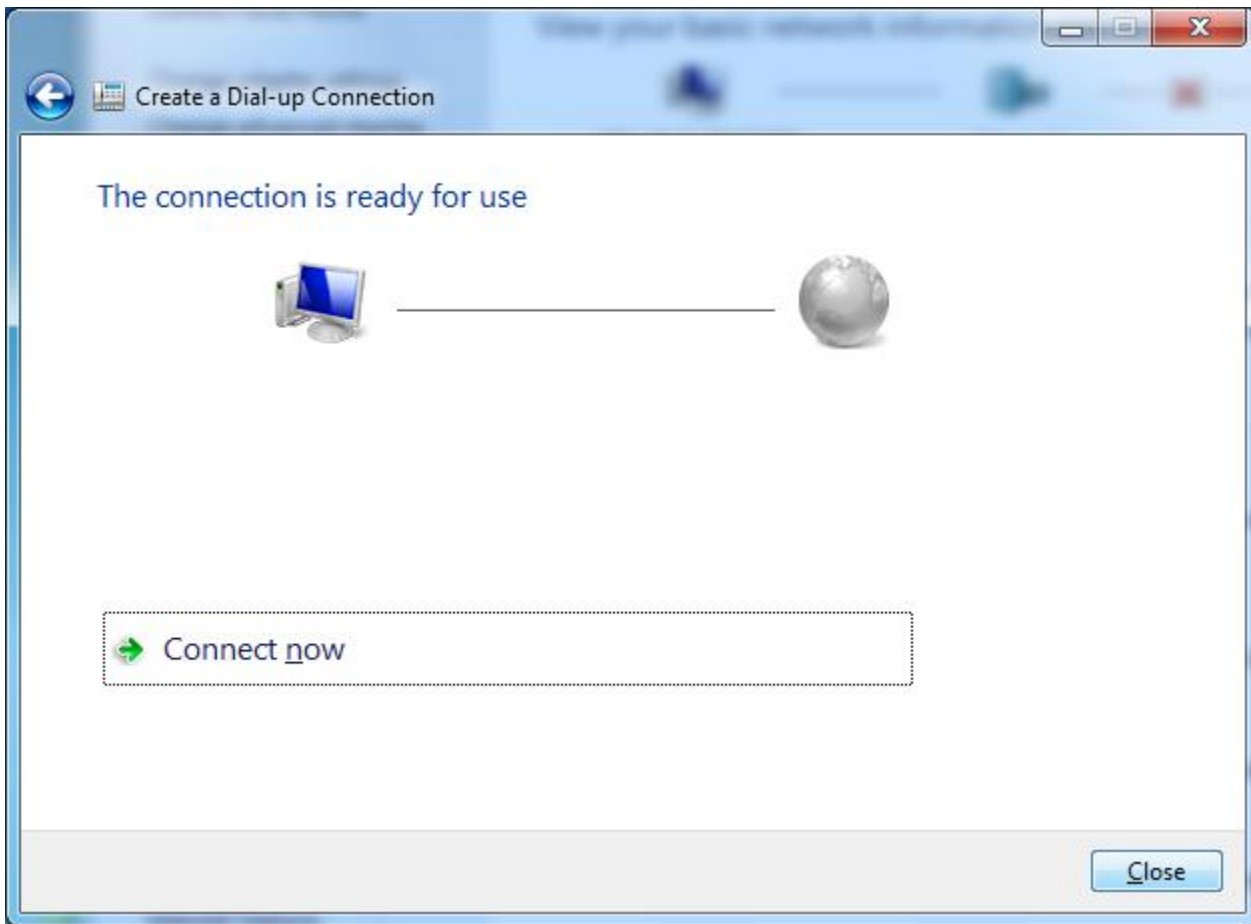
[I don't have an ISP](#)

Connect Cancel

Click **Skip**



Click **C**lose



Click [Change adapter settings](#)

The screenshot shows the Windows Network and Sharing Center control panel window. The title bar reads "Network and Internet" and "Network and Sharing Center". The address bar contains "Search Control Panel". The left sidebar has a "Control Panel Home" link and a "Change adapter settings" link, which is highlighted with a black arrow. Below it are "Change advanced sharing settings" and "See also" links for "HomeGroup", "Internet Options", and "Windows Firewall". The main content area is titled "View your basic network information and set up connections" and includes a "See full map" link. A network diagram shows "WIN-GQLR8GT3PE (This computer)" connected to "Network", which is connected to "Internet" (marked with a red X). Below this is a section "View your active networks" with a "Connect or disconnect" link. It shows a "Network Work network" with "Access type: No Internet access" and "Connections: Local Area Connection". The "Change your networking settings" section includes links for "Set up a new connection or network", "Connect to a network", "Choose homegroup and sharing options", and "Troubleshoot problems".

Control Panel Home

[Change adapter settings](#)

Change advanced sharing settings

See also

HomeGroup

Internet Options

Windows Firewall

View your basic network information and set up connections

See full map

WIN-GQLR8GT3PE (This computer) Network Internet

View your active networks [Connect or disconnect](#)

Network
Work network

Access type: No Internet access
Connections: Local Area Connection

Change your networking settings

[Set up a new connection or network](#)
Set up a wireless, broadband, dial-up, ad hoc, or VPN connection; or set up a router or access point.

[Connect to a network](#)
Connect or reconnect to a wireless, wired, dial-up, or VPN network connection.

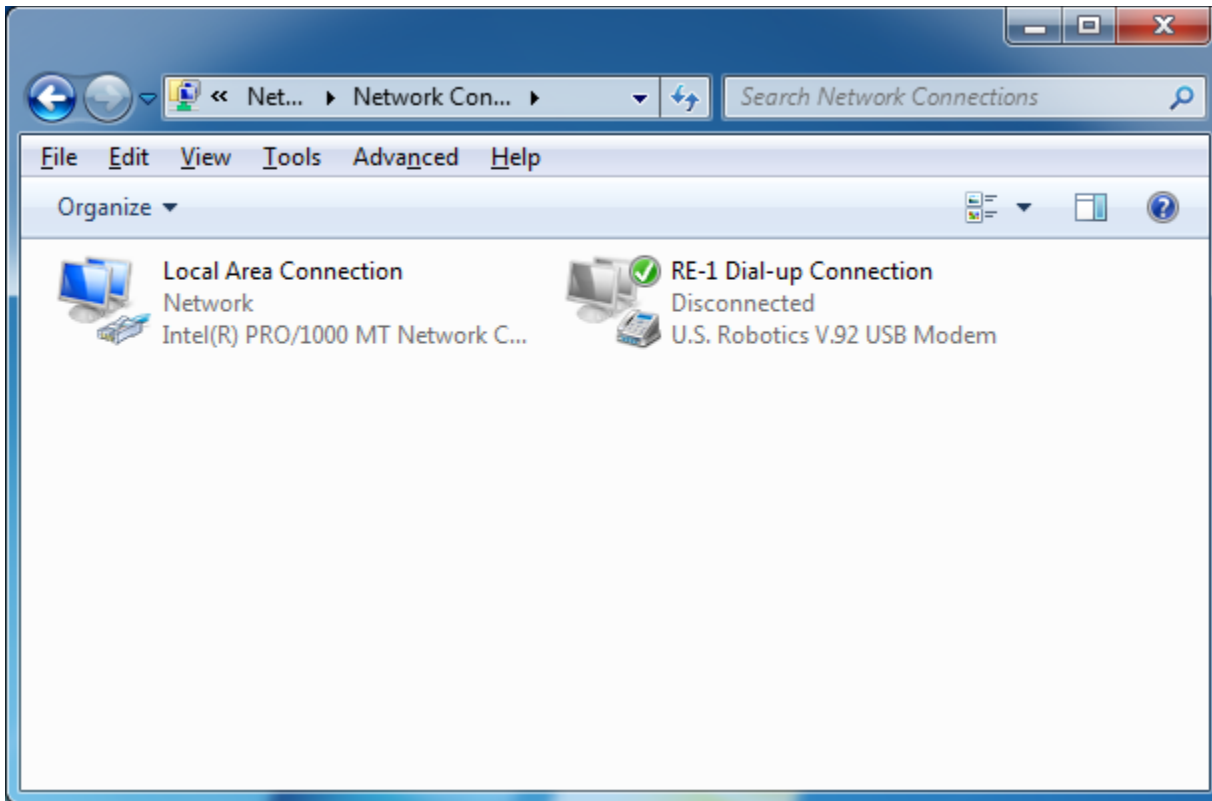
[Choose homegroup and sharing options](#)
Access files and printers located on other network computers, or change sharing settings.

[Troubleshoot problems](#)
Diagnose and repair network problems, or get troubleshooting information.

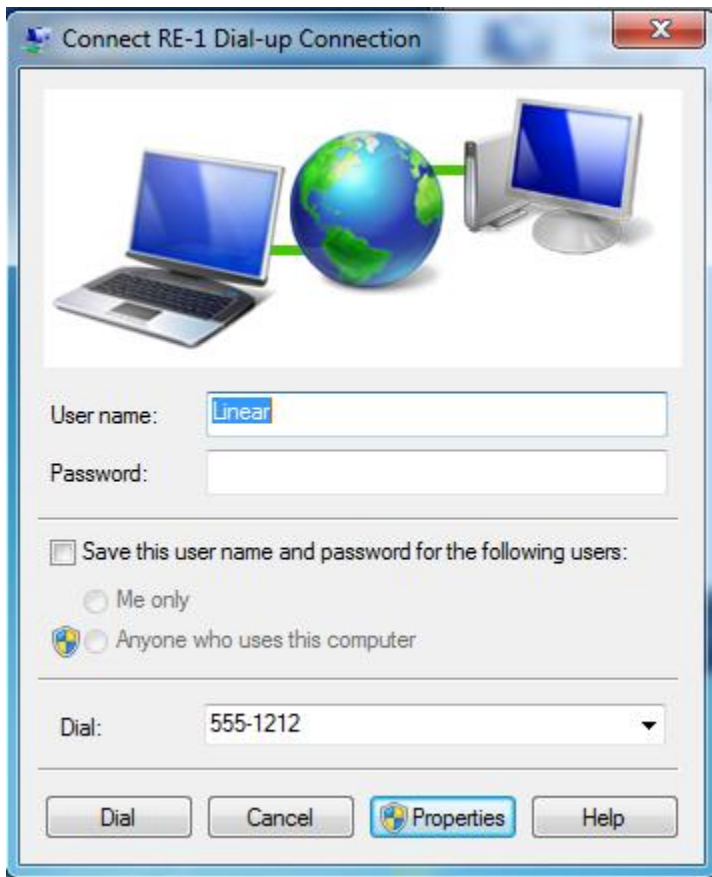
Right-click on the RE-1 connection and drag it to the desktop

Click Create shortcut here

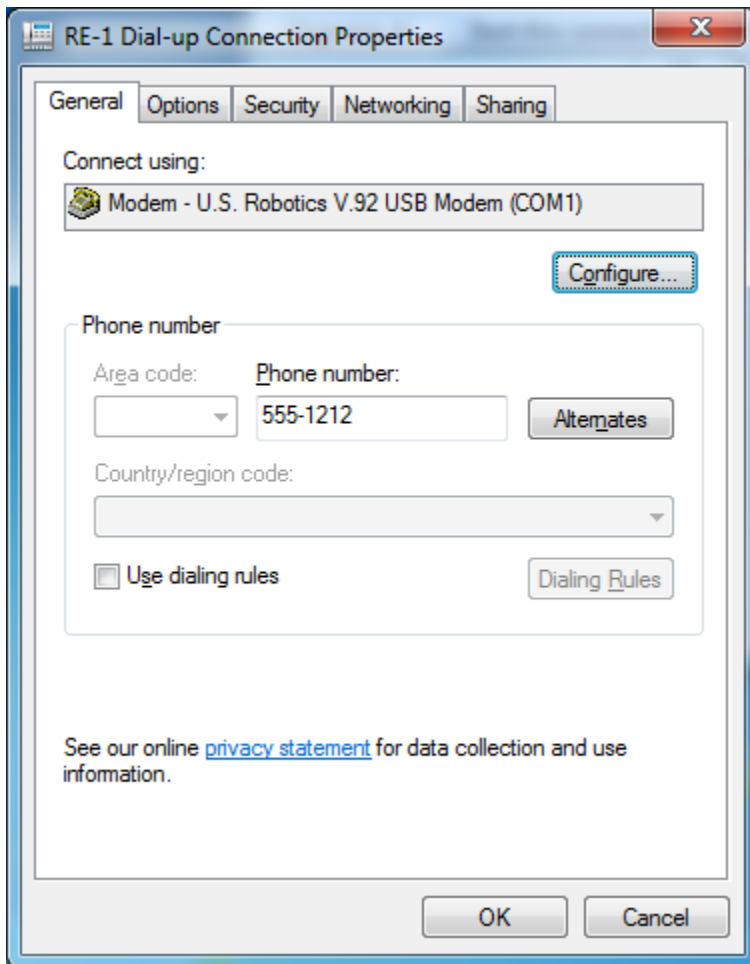
Double-click the shortcut to open the dialer



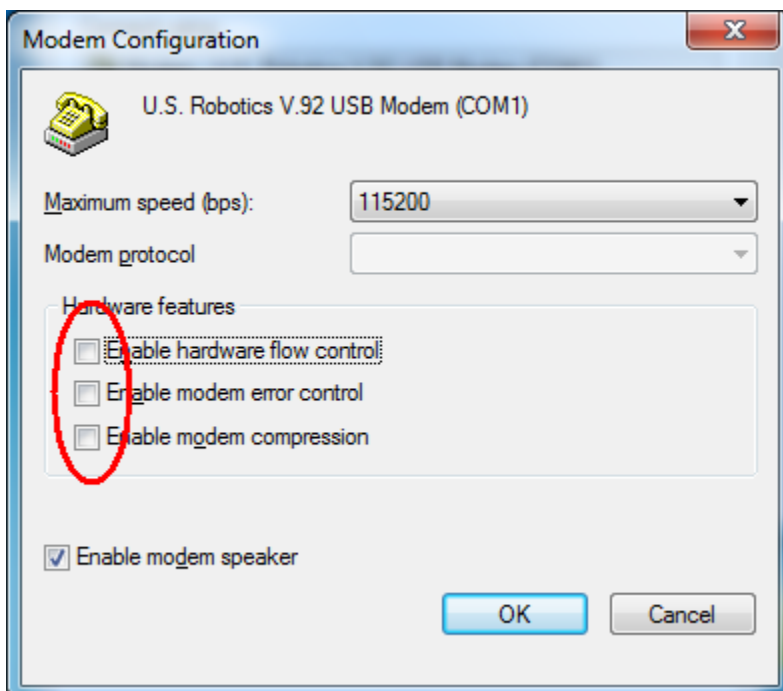
Click the **Properties** button



Click **Configure**



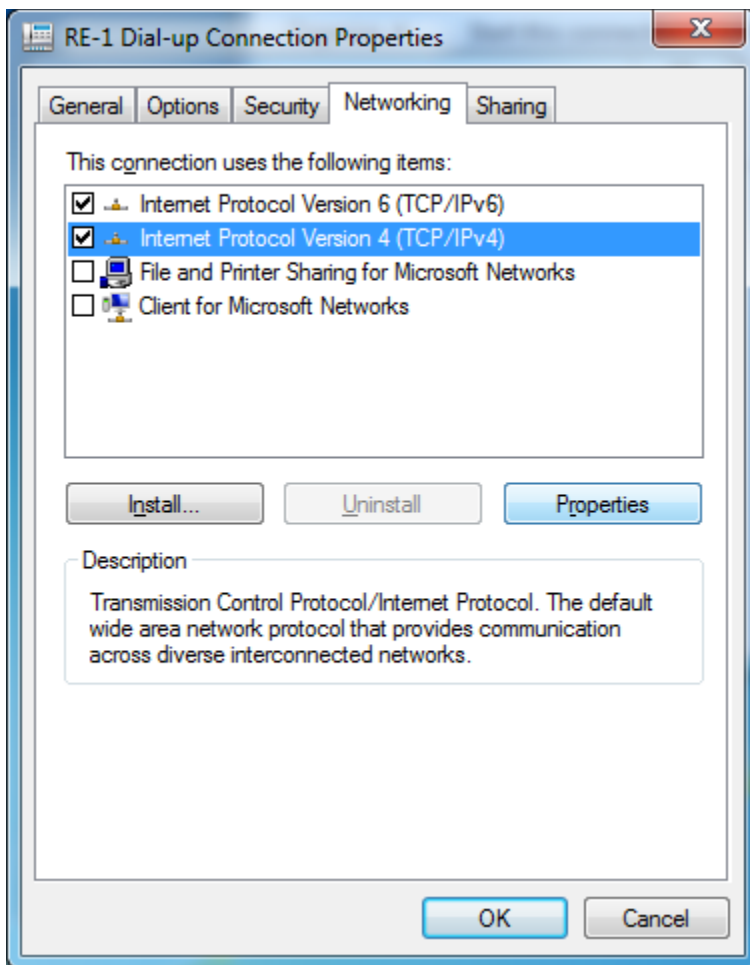
Uncheck the three boxes and click **OK**:



Click the Networking tab

Select Internet Protocol Version 4 (TCP/IPv4)

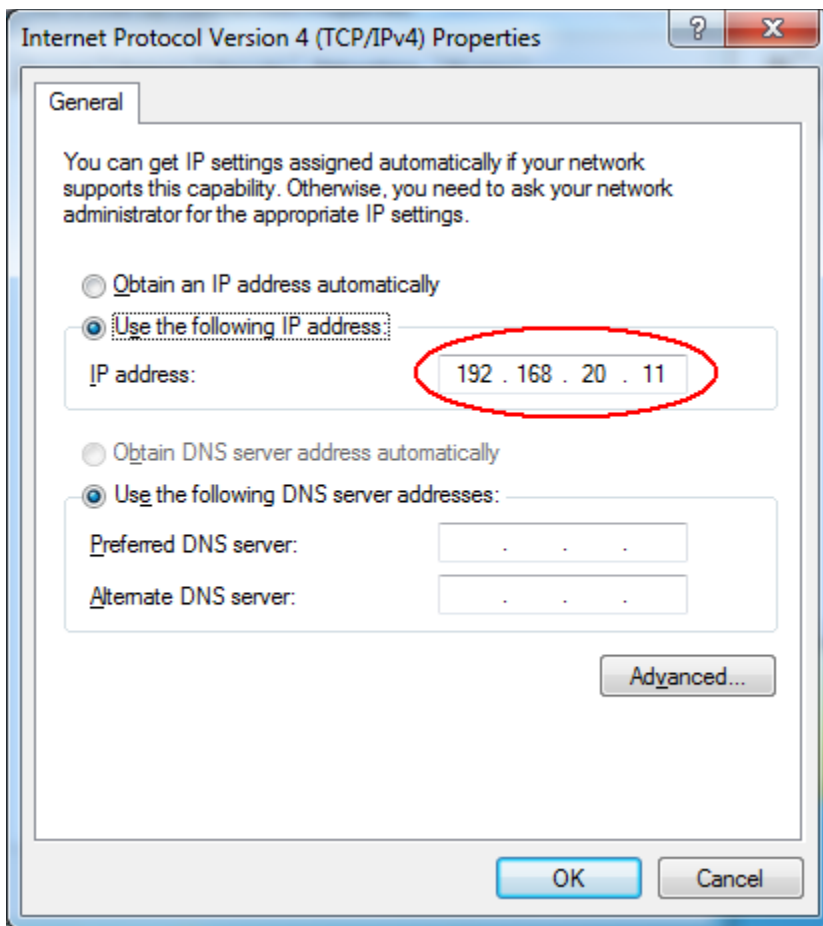
Click **Properties**



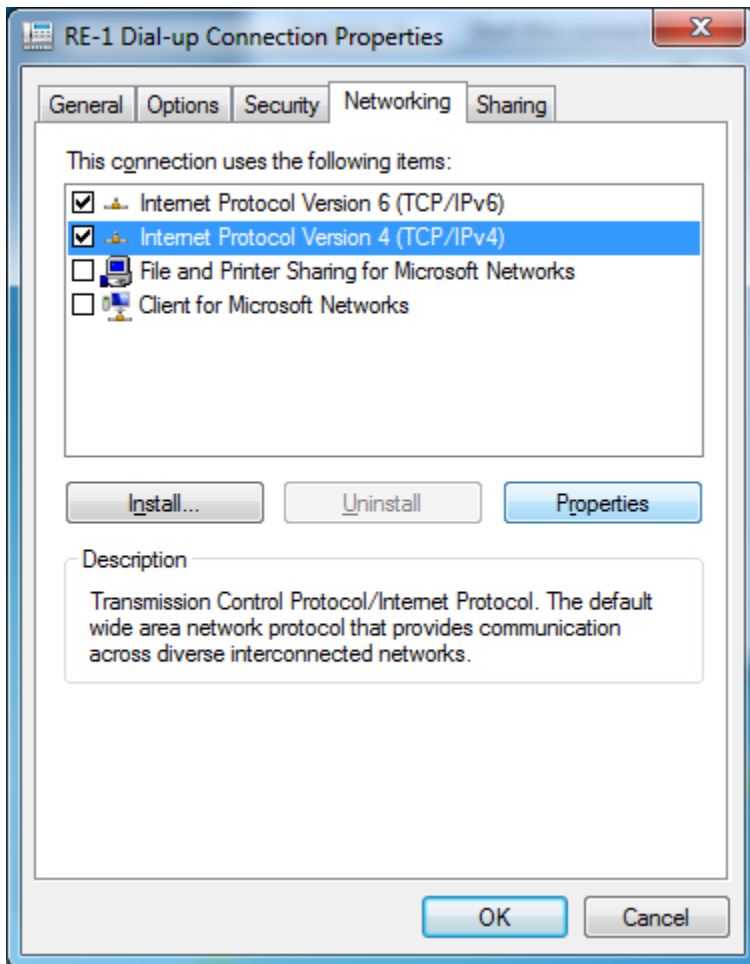
Click Use the following IP address

Enter the IP address

Click **OK**:



Click **OK**



Click **Dial** to connect to the panel



When done, click the yellow network icon at the right end of the Task Bar

Click the RE-1 connection link

Click Disconnect

