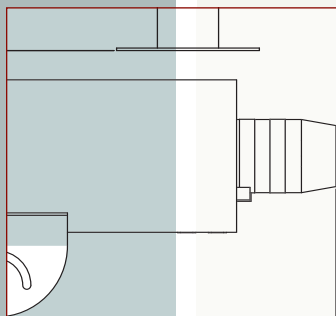
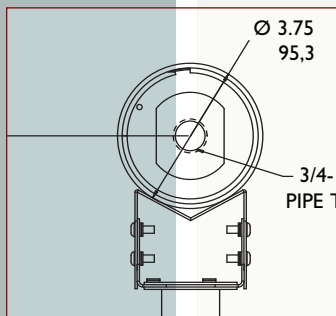
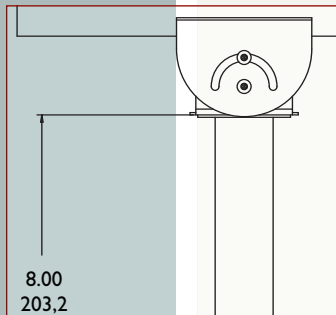




- **Stainless Steel Construction**
- **Excellent Protection Against Dust & Water**
- **Optional Built-in Window Heater/Defogger**
- **Pressurization Model Option**

Stainless Steel Outdoor Housings

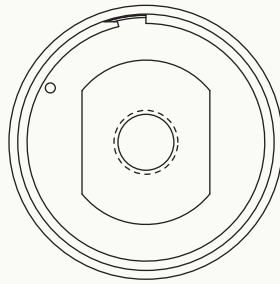


HS9383S Series

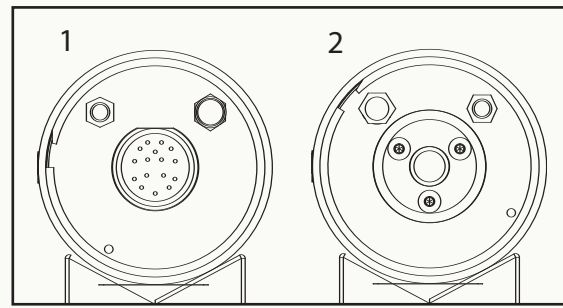
The HS9383S Stainless Steel Series Housings are designed to protect a camera and lens from extreme environments. These sealed housings are constructed of 300 grade stainless steel and can withstand a variety of harsh chemicals employed in manufacturing and food processing facilities as well as salt water environments. The enclosure includes a mounting cradle that can be rotated 360 degrees to square the camera when wall mounting. The front cap contains a glass viewing window with an integrated heater option that minimizes fogging or freezing in high humidity or cold temperature conditions.

For wiring, the housing contains a conduit hole sized for 3/4-inch conduit. A pressurizable version is also available that includes a 12 pin stainless steel connector along with fill and release valves.

HS9383S REAR CAP OPTIONS - CABLE ENTRY

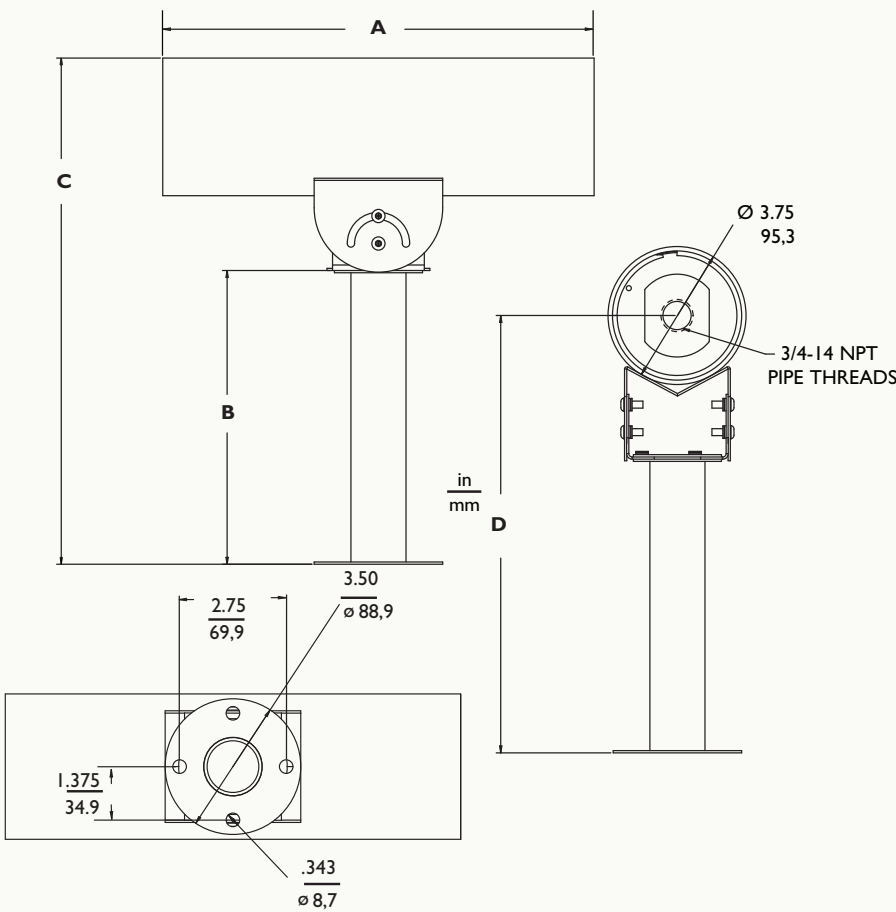


Standard Rear Cap
3/4-inch Conduit Hole

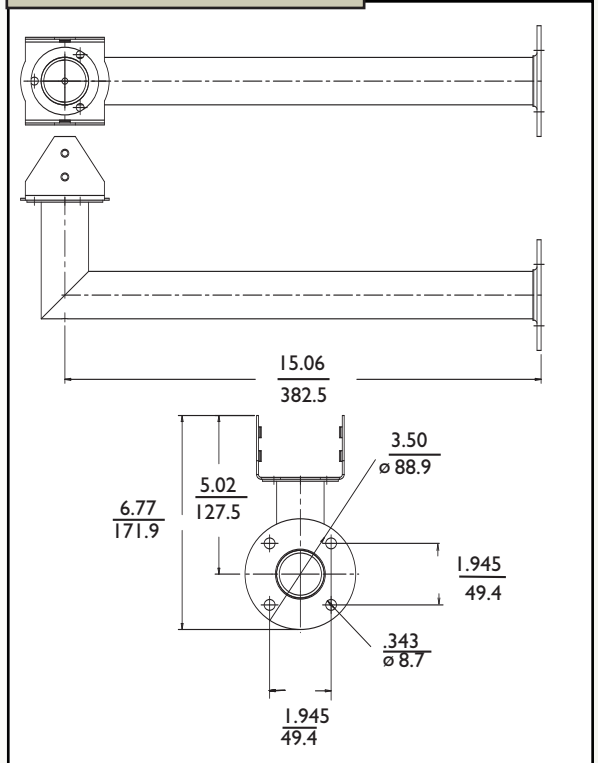


Pressurization Rear Cap
1-12 Pin Stainless Steel Connector
2- Rear cap with Connector cover installed.

DIMENSIONAL OUTLINE CONDUIT CABLE ENTRY OPTION: HS9383S, HS9383S-2H, HS9383S-5H HS9383S-6H



MT9215SS L-MOUNT OPTION



ENCLOSURE DIMENSIONS		HS9383S HS9383S-2H	HS9383S-5H HS9383S-6H
A	Length	11.82 in / 300.22 mm	14.82 in / 376.4 mm
MOUNT DIMENSIONS		MT9208SS	MT9212SS
B	Mount Height	8.06 in / 204.7 mm	12.06 in / 306.3 mm
C	Overall Mounted Height	13.85 in / 351.8 mm	17.85 in / 453.3 mm
D	Overall Height to center of conduit entry	11.97 in / 304.0 mm	15.97 in / 405.6 mm

ORDERING GUIDE

MODEL No.	PREINSTALLED HEATER REQUIRES 10 WATTS	RATED INPUT	PRESSURIZATION OPTION	VOLTAGE RANGE	CABLE ENTRY	POWER TRANSFORMER*
HS9383S	---	---	---	---	3/4" NPT Conduit Hole	No
HS9383S-2H	Heater	24VAC, 60Hz	No	21.6 to 26.4		No
HS9383S-5H	Heater	230VAC, 50Hz	No	207 - 253		Yes*
HS9383S-6H	Heater	120VAC, 50/60Hz	No	108 - 132		Yes*
HS9383S-P	---	---	Yes	---	One Bayonet - Locking 12-Pin Stainless Steel connector (Shell size =14) with sealed stainless steel mating connector supplied**	No
HS9383S-2HP	Heater	24VAC, 60Hz	Yes	21.6 to 26.4		No
HS9383S-5HP	Heater	230VAC, 50Hz	Yes	207 - 253		Yes*
HS9383S-6HP	Heater	120VAC, 50/60Hz	Yes	108 - 132		Yes*

* Includes Transformer that steps voltage down to 24V to power heater. These models can be used with 115V or 24V cameras.
 ** Pressurization Model can be shipped filled with Dry Nitrogen pressure upon request. Contact Aigis Sales for price and lead time.

SPECIFICATIONS

Window: 0.118 in (3 mm) thick glass. Thermostatically-controlled window on heater/defogger models. (Polycarbonate window available - call factory)

Housing Mounting: Two (2) 1/4-20 tapped holes.

Camera Mounting: Removable cradle assembly with hole pattern for mounting camera/lens assembly. Cradle may be rotated through 360°.

Construction: 300 Grade Stainless Steel enclosure. Camera cradle is made from aluminum.

Finish: Stainless Steel (silver).

Dimensions: See drawings.

Weights

Housings:

Standard Conduit Housings: 6.6 lb (2.99 kg)

Pressurizable Housings: 7.3 lb (3.3 kg)

Mounts:

MT9208SS: 8" Mount 1.2lb (0.54 kg)

MT9212SS: 12" Mount 1.6 lb (0.73 kg)

MT9215SS: 15" L Shaped Mount 2.4 lb (1.09 kg)

Maximum Camera/Lens Size

HS9383S	Camera up to 2.5W x 2.3H in (64W x 58H mm) Lenses up to 2.6W x 2.9H in (67 W x 75H mm) Camera & Lens up to 7 inches in length.
HS9383S-P	
HS9383S-2H	Camera up to 2.5W x 2.3H in (64W x 58H mm) Lenses up to 2.6W x 2.9H in (67 W x 75H mm) Camera & Lens up to 9 inches in length.
HS9383S-2HP	
HS9383S-5H	Camera up to 2.5W x 2.3H in (64W x 58H mm) Lenses up to 2.6W x 2.9H in (67 W x 75H mm) Camera & Lens up to 9 inches in length.
HS9383S-6H	
HS9383S-5HP	
HS9383S-6HP	

ENVIRONMENTAL

Temperature: (heater versions)

At external ambient temperatures of -40°F to 122°F (-40°C to 50°C), maintains internal temperatures between -4°F to 131°F (-20°C to 55°C).

Salt Atmosphere: Designed to meet or exceed, MIL-STD-810E, Method 509, Procedure I.

Enclosure Protection: Designed to meet IP68 & NEMA-6P.

Safety: Designed to meet UL2044

ACCESSORIES

HS9383TK Tamper Resistant Kit: Includes screws and insertion tool to permit tamper-resistance for one housing.

MT9208SS: Stainless Steel Wall/Column mount, 8-inch length.

MT9212SS: Stainless Steel Wall/Column mount, 12-inch length.

MT9215SS: Stainless Steel Wall/Column mount, 15-inch length.

HS9383SS: Sunshield provides protection from the direct rays of the sun and promotes cooling to reduce internal housing temperatures.

CUSTOM OPTIONS

Call Aigis for details on Custom Options

AVAILABLE IN ALL MODELS:

TS: Tamper Switch sends an alarm when enclosure is opened.

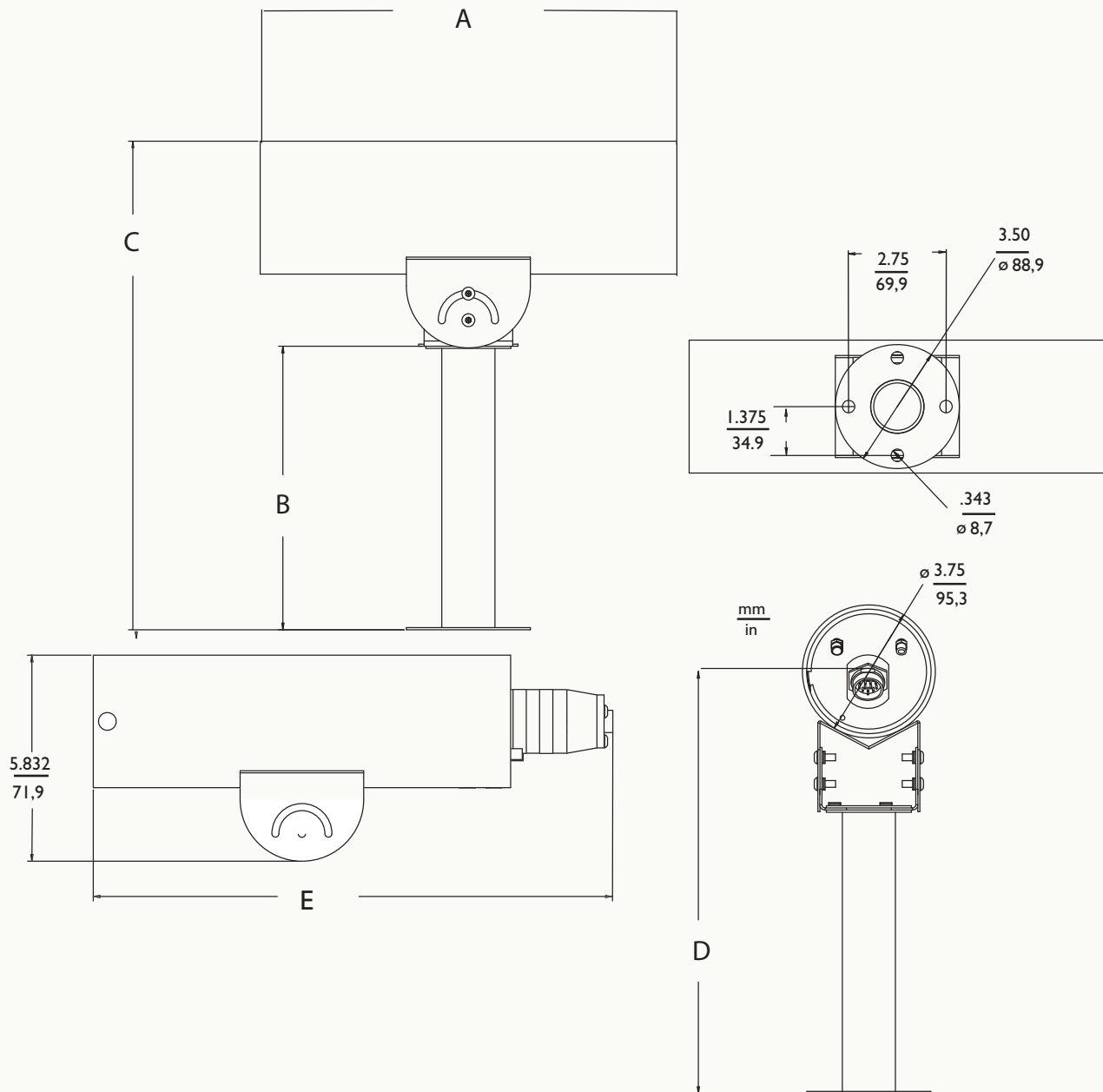
PRESSURIZATION MODELS ONLY:

PS: Pressure Sensor to alert user to a predetermined change in pressure level.

OSD: On Screen Display with pressure sensor that can display temperature and/or pressure level on video signal.

IP: Network Wiring Configuration that includes a 12-pin connector pre-wired to accommodate Cat5e and Cat6

DIMENSIONAL OUTLINE PRESSURIZATION OPTION - HS9383S-P, HS9383S-2HP, HS9383S-5HP, HS9383S-6HP



ENCLOSURE DIMENSIONS		HS9383S-P HS9383S-2HP	HS9383S-5HP HS9383S-6HP
A	Length	11.82 in / 300.2 mm	14.82 in / 376.4 mm
E	Length With Connector	14.72 in / 373.9 mm	17.72 in / 450.1 mm
MOUNT DIMENSIONS		MT9208SS	MT9212SS
B	Mount Height	8.06 in / 204.7 mm	12.06 in / 306.3 mm
C	Overall Mounted Height	13.85 in / 351.8 mm	17.85 in / 453.3 mm
D	Overall Height to center of entry	11.97 in / 304 mm	15.97 in / 405.6 mm



mechtronics

©2008 Aigis Mechtronics

1124 Louise Road, Winston-Salem, NC 27107-5450

Tel: 336.785.7740 Fax: 336.785.7744

www.aigismech.com

Data subject to change without notice

7/08 rev_03
Printed in U.S.A.